

ASIAN ART in LONDON 2016

by Jasleen Kandhari

Asian Art in London (AAL) is now in its 19th year, and this autumn's event runs from 3 to 12 November. Asian Art in London this year has 48 dealers and galleries from the UK and overseas showcasing a range of works of art from South, Southeast Asia, Central Asia, China, Japan, Korea, the Himalayas and the Islamic world dating from antiquity to the contemporary, along with sales at the auction houses. Alongside the selling exhibitions, visitors can attend the plethora of museum exhibitions, lectures, gallery talks, study days, panel discussions and conferences which coincide with Asian Art in London week. The Late Night Openings start with Kensington Church Street on 5 November, St. James's on 6 November and Mayfair on 7 November, all are from 5-9pm. Not all galleries participate in these late night openings, so refer to the AAL booklet or website for individual details. The AAL directory includes maps and an events calendar and can be found in members' galleries or obtained from the Asian Art in London office, tel +44(0)20 7499 2215 or email info@asianartinlondon.com. The annual gala party is on 3 November at The China Exchange, entry by ticket only.

ALONGSIDE gallery shows, there are museum exhibitions and events which coincide with Asian Art in London week. The AAL symposium on *The Science of Art* takes place at the China Exchange in Soho on 9 November. There is a two day short course on *Classical Indian Paintings* at Christie's on 10 and 11 November, a study day on *Indian Textiles* at University of Oxford on 12 November and a panel discussion on *Chinese and Japanese Works of Art in the Collection of Her Majesty the Queen* at the Queen's Gallery, Buckingham Palace, on 10 November.

At the British Museum there is the exhibition, *Courting to Contract: Love and Marriage in Iran* until 20 November in which love and courtship are explored through drawings, illustrated manuscript pages and objects, depicting intimate scenes and classical Persian accounts of celebrated romances along with embroidered wedding garments and accessories. The Victoria and Albert Museum displays their new acquisition of *obi* and *kimono* in *The Creative Genius of Kondaya Genbei X*, which opens on 8 November. Asia House presents *Vision and Revision: The Art of Chinese Woodblock Prints* which runs until 11 November whilst the Brunei Gallery (SOAS) presents, *Academics, Activists & Agents: A*

History of the School of Oriental and African Studies 1916-2016 until 17 December. Over at University of Oxford's Ashmolean Museum, there are three Asian art exhibitions entitled, *Power and Protection: Islamic Art and the Supernatural*, *Liu Dan: New Landscapes*, and *Old Masters and Hiroshige's Views of Mount Fuji*, all running into 2017.

LATE NIGHT OPENING

KENSINGTON CHURCH STREET

Saturday 5 November

Receptions at Gregg Baker Asian Art, Fleurdeyls Antiquités, Marchant, and Jorge Welsh Works of Art

Gregg Baker's exhibition this year, at 142 Kensington Church Street, is *Infinite Space, the New Japan*. For the first time, the gallery is presenting an exhibition devoted to seven prominent Japanese avant-garde artists and the work they created in the post-World War II art scene. At the end of the hostilities Japan was under great pressure to modernise and its artists' also needed to reinvent themselves and their art by exploring new visual forms while carefully preserving their ancestral cultural heritage. Suda Kokuta, Takeo Yamaguchi, Morita

Shiryu, Yuichi Inoue, Hisao Domoto, Ochi Kenzo and Tagashige Mori are among those artists for whom art is a mystical experience and its creation a vital daily practice. The lives and work of these men reflect a tireless search for an art of purity, sincerity and transcendence, deeply infused with influences of a culture obsessed with nature, form and texture along with an underlying aesthetic gained by the constant exposure to Buddhism and its philosophy.

Fleurdeyls Antiquités presents *The Art of Display* at 150 Kensington Church Street featuring Chinese works of art, wood stands and Chinese scholar's objects. Marchant is holding their *Kangxi Blue and White and Underglaze Copper-Red* exhibition at 120 Kensington Church Street, comprising 34 porcelain pieces in perfect condition in a variety of forms produced during the Kangxi period (1662-1722) including eight 'mark and period' pieces, several with copper red details arranged in chronological order. Highlights include the previously unknown form of Chinese blue and white underglaze red porcelain, the phoenix tail vase, *yan yan*, painted with the 'Eight Horses of Mu Wang' and an imperial Chinese porcelain blue and white and underglaze copper-red deep bowl, *wan*, painted with flora and fauna motifs, the base of which has a six-character reign mark of the Kangxi period. A catalogue is available.

In his 30th anniversary exhibition, Jorge Welsh is holding *A Time and a Place: Views and Perspectives on Chinese Export Art*, at 116 Kensington Church Street, focusing on landscape and architectural paintings in Chinese export art on porcelain, as well as paper, highlighted by a porcelain punch bowl depicting the London Hospital in Whitechapel.

LATE NIGHT OPENING

ST. JAMES'S

Sunday 6 November

Receptions at Atkis Gallery, Raquelle Azran Vietnamese Art, Rosemary Bandini, Joost van den Burgh, Brandt Asian Art, Cohen & Cohen, Rob Dean Art, Genrokuart, Malcolm Fairley, Peter Finer, MD Flacks, Grosvenor Gallery, Nicholas Grindley, Ben Janssens Oriental Art, Littleton & Hennessy, Mika Gallery Shouun Oriental Art, Simon Pilling, Priestley & Ferraro, Simon Ray Indian & Islamic Works of Art, Röell Fine Art, Runjeet Singh, Jacqueline Simcox, Hanga Ten, Grace Tsumugi Fine Art, and Jonathan Tucker & Antonia Tozer Asian Art.



Ivory netsuke of a rat by Masanao of Kyoto, circa 1780, length 5.5cm, height 4 cm, Rosemary Bandini



Ao Dai II (1996) by Hoang Tich Chu, 60 x 60 cm, Raquelle Azran



Silence, Work No. 5 (2003) by Katsunori Hamanishi (b 1949), diptych, mezzotint with gold leaf, edition of 50, 59 x 92 cm, Hanga Ten

Atkis Gallery presents an exhibition on modern and contemporary Chinese painting entitled *Chinese Black*, by Zao Wou-Ki and Wang Keping at 10-11 Park Place, whilst at the Grosvenor Gallery's new address on 32 St James's Street (first floor), the artists represented are Bakre, Ribeiro, Souza

in the exhibition, *Indian Modernist Landscapes 1950-1970*.

Raquelle Azran presents a group show at 6 Masons Yard, Duke Street of Vietnamese fine art entitled, *Vietnam Past and Presents*, contrasting earlier generations of Vietnamese artists in the epoch of French



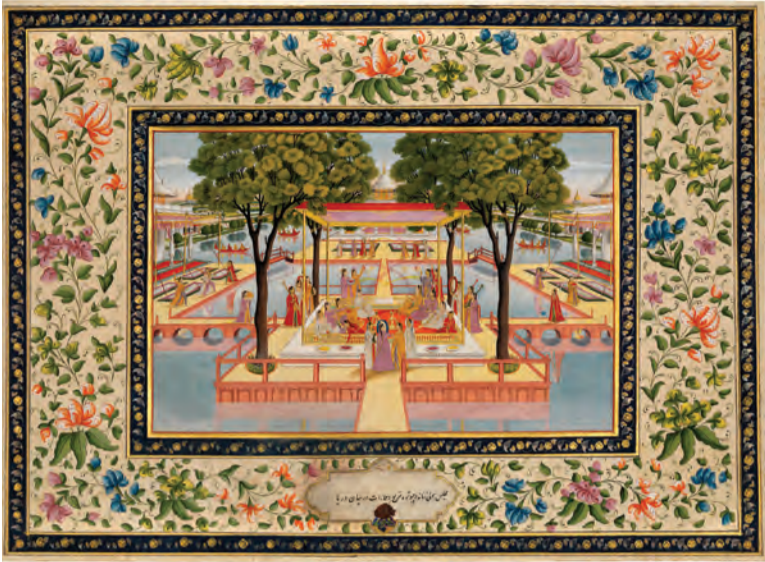
Illustration to the *Shangri Ramayana Series*, Kulu or Bahu, circa 1700-1710, Rob Dean Art



Symbol of Infinite Space by Suda Kokuta (1906-1990), signed, titled and dated 1960-8-28 on the reverse, oil and mixed media on canvas, 91.5 x 65.5 cm, Gregg Baker



Chinese porcelain blue and white vase of baluster form, ping, Kangxi period, circa 1690, height 44.8 cm, Marchant



Ladies celebrate Holi on a pleasure pavilion, leaf from an album made for Antoine Polier, attributed to Mihr Chand, with calligraphy by Hafiz Nur Ullah, Lucknow, India, circa 1780, opaque watercolour and gold on paper, Folio 45.5 x 62 cm, Prabhad Bubbar



Collection of bear hair and lacquer spear covers, late Edo period, Japan, height of the largest 72 cm, Malcolm Fairley



Dish decorated with landscape design in underglaze blue, Shoki-Imari ware, Japan, 1630-1640, diam. 19 cm, Genrokuart



Tibetan four-mirror armour set, front plate diam. 18.5 cm, steel and gilt-copper, leather, 18th or 19th century, Runjeet Singh

Indochina, such as Hoang Tich Chu and Luu Cong Nhan, with contemporary Hanoi artists like Dinh Hanh and Dinh Thi Tham Poong, exploring European influences in their work, including paintings in lacquer on wood, oil on canvas, watercolour on handmade paper, and woodblock prints.

Rosemary Bandini presents her exhibition of Japanese *netsuke*, *kiseruzutsu*, as well as lacquer and other works of art at Gallery 8 Duke Street, with her catalogue-cover piece being an 18th-century ivory netsuke of a rat by Masanao of Kyoto, who is considered to be the greatest of the 18th-century netsuke carvers with a unique sense of tension and 'life' in his work.

Cohen and Cohen are featuring Chinese export porcelain and works



Bronze incense burner in the form of an elephant, China, Ming dynasty, 16th/17th century, 16.5 x 16.5 cm, Ben Janssens

of art in their exhibition entitled, *Tiger Tiger*, at 67 Jermyn Street.

Rob Dean Art offers a range of fine classical Indian paintings in their forthcoming exhibition at 32 St James's Street to include paintings from the courts of Kangra, Guler, Bahu and Mandi. The subject matter ranges from paintings of *Nayikas* waiting for their lover's return, to iconic images of gods and heroes from the *Ramayana* and the *Bhagavata Purana* and includes portraits ranging from princes and royalty to soldiers and paupers. Highlights include paintings from the *Shangri Ramayana* series, pages from an early *Gita Govinda* series, an unusual drawing of a yogic master and a fine painting depicting a wedding procession from the *Shiva Purana*.

Malcolm Fairley's exhibition at 40 Bury Street comprises Meiji-period metalwork, enamels and lacquer, as well as a collection of bear fur and lacquer spear covers from the late Edo period and a collection *samurai* related items including helmets, masks, armour and armour surcoats, whilst Grace Tsumugi's exhibition at 8 Duke Street features Japanese works of art from late Edo, Meiji and Taisho periods, as well as contemporary bamboo art, highlighted by five works and paintings by Shibata Zeshin (1807-1891) that illustrate the artist's skill and inspiration from nature in the

Continued on page 18

THROCKMORTON FINE ART



CHINA
Cong Prismatic Cylinder
Late Neolithic Period, Liangzhu Culture
ca. 3200-2300 BCE
Jade
H: 12 5/8 in.

145 EAST 57TH STREET, 3RD FLOOR, NEW YORK, NY 10022

TEL: 212.223.1059 FAX: 212.223.1937

www.throckmorton-nyc.com info@throckmorton-nyc.com

FLYING CRANES
ANTIQUES LTD
Antique Arts of Japan



A finely modeled Satsuma censer, its reticulated body and cover designed with elaborate gilt and enamel brocading. On the alternating panels, *bijin* and children under pine and sakura, villagers by the banks of a river and families entertaining lakeside are executed in minute detail with gilt and jewel-toned enamels. Gilt Ryozan and Shimazu signature and seal on the base. Ht., 7.25". Meiji Period. Japan.

WWW.FLYINGCRANESANTIQUES.COM
212.223.4600 | FLYINGCRANES@VERIZON.NET
SHOP.FLYINGCRANESANTIQUES.COM

LOCATED AT
MANHATTAN ART & ANTIQUES CENTER
1050 SECOND AVENUE, NY 10022

WWW.THE-MAAC.COM
212.355.4400 | INFO@THE-MAAC.COM





Gilt-bronze dragon head terminal, Western Han period, 206 BC to AD 9, length 24.5 cm, Eskenazi Ltd



Bamboo hanging vase with boat, Shibata Zeshin (1807-1891), Meiji period, circa 1880 30.7 x 11.4 cm, Grace Tsumugi Fine Art



Punch Bowl, porcelain decorated in grisaille and gold, China, Qing dynasty, Qianlong period (1736-1795), height 17 cm, diam. 40.3 cm, Jorge Welsh

bamboo hanging vase and *sumi-e* painting of bamboo.

Exhibiting for the first time at AAL this year is Peter Finer at 38-39 Duke Street, showing a selection of Islamic and Oriental arms and armour. Also new to AAL this year, Genrokuart's exhibition at 6 Bury Street entitled *Four Hundred Years of Japanese Porcelain, 1616-2016*, offering items from the early years of blue-and-white porcelain production highlighted by the 17th-century underglaze blue Shoki-Imari dish and including 17th- and 18th-century polychrome wares, as well as Chinese 17th-century porcelains produced at Jingdezhen for the Japanese market - Ko-Sometsuke and Ko-Akae.

MD Flacks is presenting the exhibition *The Swinging Scholar: Scholar's Art Old and New* at 22 Masons Yard. And, once again, Nicholas Grindley is showcasing Chinese photography in the exhibition called *The Photography of Dr Georges Auguste Morache (1837-1906)* at 38 Bury Street, featuring Chinese subject matter in his 19th-century photographs.



Writing box by Tsuishu Youzei XX (1880-1952), Taisho/early Showa period, 1915-29, carved coloured lacquers, choshitsu, 21 x 12 x 3.5 cm, signed and sealed tomobako, Simon Pilling



Bahar-i-Danish 'The Springtime of Knowledge' by Shaikh 'Inayatallah Kambob of Delhi, Mughal Delhi, late 17th/early 18th century, Sam Fogg

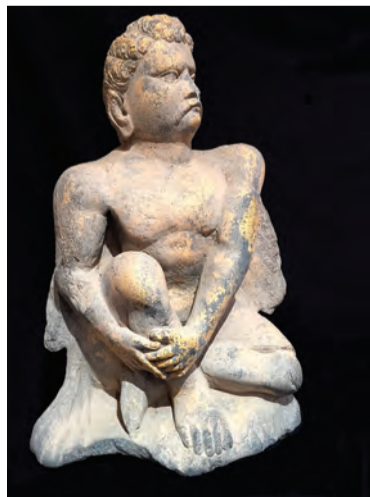
Ben Janssens is presenting in his gallery *In Scholar's Taste*, and exhibition of Ming- and Qing-dynasty Chinese works of art in wood, lacquer, ivory, ceramic, enamel and bronze, including miniature furniture, Ming and Qing lacquerware, such as a small brown *tixi* pattern box and a large red lacquer box with a *leirwen* pattern, wood brush pots, stands and incense burners, and an iron painting, *tiehua*, dated to 1964.

Simon Pilling is holding an exhibition at 8 Duke Street entitled, *Between Light and Shadow* on the Buddhist theme of impermanence and the transience of nature, specialising in lacquerware. This exhibition features a range of Japanese lacquerware including an Edo/Meiji period writing box, *suzuribako* rendered in the Rimpa style with floral motifs sprinkled with golden *makie*, a Showa period carved writing box in polychrome by Tsuisu Youzei XX who revitalised and modernised this art form in Japan in the 20th century, as well as works by the contemporary lacquer artist Ando Saeko (b 1968), who gives physical form to *utsuroi*, the process of balance between light and shadow by harnessing lacquer's characteristic for change over time.

Littleton and Hennessy are presenting a range of Chinese works of art and scholar's objects at 1 Princes Place, highlighted by a large enamelled *famille-verte* Yen Yen vase from the Kangxi period depicting a scene from a novel, probably *Sanguo yanyi* (Romance of the Three Kingdoms), written by Luo Huangzhong, illustrating Cao Cao, Chancellor of the Eastern Han dynasty and one of the central figures in the novel, offering his sword as a gift. Priestley & Ferraro's show this year includes Chinese and Korean ceramics and works of art.

Simon Ray, as usual, holds an Indian & Islamic Works of Art exhibition at 21 King Street with the show represented in his fully illustrated catalogue. Runjeet Singh's exhibition, Eastern Arms and Armour at 5 Ryder Street features a range of fine pieces from the Middle East, India, Southeast Asia, Central Asia, China and the Himalayas, highlighted by an important collection of Indo-Persian daggers and Tibetan objects. Highlights include an 18th- or 19th-century Tibetan four armour set decorated with Tibetan Buddhist iconography and an 18th-century Persian Pesh Kabz *wootz* patterned steel blade dagger with walrus ivory grip inscribed with *Quranic* inscriptions. A catalogue is available.

Röell Fine Art, from the Netherlands, presents the exhibition, *From Distant Shores: Export Art from South and East Asia* at 4 Bury Street. Hanga Ten at 8 Duke Street is exhibiting the Japanese master print



Large schist figure of Atlas, Gandhara, 2nd/3rd century, height 48 cm, Jonathan Tucker Antonia Tozer



Vibhisana lends his golden chariot to Rama and Sita, Scene from the Ramayana, Kangra, circa 1800-10, opaque watercolour and gold on paper, folio: 25.6 x 36 cm, Francesca Galloway



Shakyamuni's miracles, 14th century Tibet, Eastern Region, distemper on cotton, 172 x 241 cm, Rossi & Rossi

maker Katsunori Hamananishi. Hamananishi succeeds Yojo Hamaguchi as the living master of colour mezzotint with recent works illustrating traditional Japanese images of nature, architecture and the *kimono* burnished by hand onto a plate, with the addition of gold and silver leaf. Based in Japan, he will be in London to deliver a presentation of his mezzotint printing technique on 7 and 8 November at the gallery.

Grace Tsumugi is showing works by the Japanese master Shibata Zeshin alongside other recent acquisitions. Jonathan Tucker and Antonia Tozer are showing a fine selection of Gandharan sculptures, as well as works from India, Southeast Asia and China at their gallery on 37 Bury street that includes a bronze Buddha and a 2nd/3rd-century large schist figure of a winged Atlas, a classical figure that can still be found in the sites at Taxila, Pakistan. A catalogue is available.

LATE NIGHT OPENING

MAYFAIR

Monday 7 November

Receptions at David Baker Oriental Art,

Rosemary Bandini, Berwald Oriental Art, Brun Fine Art, Prahlad Bubbar, Eskenazi Ltd, Jhaveri Contemporary, Sam Fogg, Francesca Galloway, Roger Keverne, Mayor Gallery, Sydney L. Moss, Nicholas Pitcher Oriental Art, Rossi and Rossi, Gallery Elena Shchukina, and Yewn Heritage Jeweller

David Baker is featuring recent acquisitions of Chinese pottery from the Song period and Korean ceramics from the Koryo and Choson periods and jades from the Ming and Qing period and a selection of Japanese ceramics highlighted by a 17th-century Japanese Kakiemon polychrome vase. Nicholas Pitcher's exhibition of *Chinese Works of Art* presents early Chinese pottery, Song, Yuan and Ming bronzes as well as Qing porcelain highlighted by a Chinese Qing dynasty silver-inlaid bronze figure of Guanyin, signed Shisou. Both galleries are located on the first floor, above Halcyon gallery at 29 New Bond Street.

Prahlad Bubbar's exhibition at 33 Cork Street, *La Lumière de la Lune et du Soleil: The Arts of India and Beyond, 1500-1930*, presents a group of fine Indian classical paintings and objects including a 16th-century Mughal painting of Emperor Akbar receiving the keys to Mankot fort from Sikandar Shah Suri from the third *Akbarnama*, Antoine Polier's 'souvenir' of Holi, a late 18th-century Mughal painting by Mihr Chand and calligraphy by Hafiz Nur Ullah, celebrating the festival of colour, a 16th-century painting from the *Palam Bhagavata Purana* and Pahari paintings and drawings from the Seu-Nainsukh family of the Punjab Hills. The field of tribal art receives attention in this gallery with a selection of fine Bhuta bronzes from Karnataka, catalogue available.

Gallery Elena Shchukina, new to the event this year, is hosting a show at 10 Lees Place by the Paris-based Chinese artist Chen Jiang Hong called *Returning Home*.



Japanese Kakiemon polychrome vase circa 1650 from a private collection, height 28 cm, David Baker

Eskenazi Ltd is having two exhibitions at 10 Clifford Street, one by the contemporary Chinese ink painter, Zeng Xiaojun (b 1954), of 10 commissioned paintings including those illustrating *penjing*, or *bonsai*, alongside a second exhibition of signature early Chinese art from private collections. This is the most diverse exhibition of early Chinese art to be held by Eskenazi in 15 years including bronze, gold and silver inlay, jade and bone works of art from the Neolithic era, 3rd century BC to the Tang dynasty, 7th to 10th century, such as a large archaic jade disc from the Shang period and a gilt bronze dragon head from the Western Han period.

Sam Fogg presents *A Library of Manuscripts from India* at 15d Clifford Street, spanning the range of South Asian manuscript production, from palm leaf manuscripts such as the 19th-century illustrated Orya manuscript of Upendra Bhanjato's poetry, manuscripts illustrating Imperial Mughal epics, such as the late Mughal manuscript, *Babar-i-Danish*, 'The Springtime of Knowledge'. Highlights include an early 20th-century, 15-metre, Deccani painted scroll *Madel Puranamu* illustrating the story of Daksha-Yajna and Virabhadra and two illustrated 19th-century Sikh manuscripts from the Punjab, *Enjoyment of the Saints*, with a chapter referring to Guru Nanak and *The Hitopadesa* (The Book of Good Council), a Sikh Book of Fables. A catalogue is available.

This year Francesca Galloway presents *Pahari Paintings from the Eva and Konrad Seitz Collection*, from late 17th to mid-19th century, at 31 Dover Street. The Seitz's are pioneer collectors who recognised the importance and value of Rajput



Ganesha within a flamed aureole, South India, Tamil Nadu, Chola period, 12th century, height 43 cm, J Eskenazi

paintings in the 1960s. Their collection was also the subject of an exhibition at the Rietberg Museum in Zurich in 2010/11. Highlights include a Kangra painting, a scene from the *Ramayana*, where Vibhisana lends his golden chariot to Rama and Sita; an 18th-century Guler painting of the glimpse of Krishna, an illustration from the Bihari-Satsai series; and a Kangra painting from the *Harivamsa* series of Krishna and the *gopis* bathing in the river Yamuna, attributed to Purkhu. The hardback catalogue of this collection will be published in spring 2017. New to AAL is Mayor Gallery on the first floor of 21 Cork Street which specialises in Zero and Concrete art, focusing on conceptualism and minimalism with an exhibition entitled *Jiang Dabai - Diffusion*.

Sydney L Moss, specialists in *netsuke*, *inro*, and early Chinese paintings and literati Chinese arts, has organised a show exploring the



Buddhist Attendant Boys, wood painted polychrome, 18th century, Korea, Joseon dynasty, Han Collection

works of the great Meiji-period carver in *Kokusai, The Genius and Stag-antler Carving in Japan*. The Mika Gallery Shouun Oriental Art, specialises in Japanese art from the prehistoric to the contemporary period, and is presenting *Jomon and Kakinuma* on the second floor at 15 Duke Street.

Rossi & Rossi are showing classical Himalayan and Indian works of art at 27 Dover Street, with a highlight being a 14th-century Tibetan *thangka* illustrating Shakyamuni's Miracles. Also exhibiting at Rossi & Rossi Gallery, for the first time during Asian Art in London, is the Mumbai-based gallery, Jhaveri Contemporary, which specialises in South Asian modern and contemporary art. On display is a solo presentation of the works of Ali Kazim from Lahore, Pakistan. The exhibition, *Ruins*, comprises one large watercolour in four parts, alongside smaller works and ceramic sculptures. The *Ruins* series is inspired by an abandoned site



Maple (2015) by Kazuko Shiihashi (b 1954, Japan), Japanese handmade paper crushed and glued on wood panels, gold leaf, natural mineral pigments, 90 x 90 cm, Kamal Bakhshi

of the once prolific Indus valley civilisation which now serves as a burial site for the local communities. This series explores the relationship between the pre-Islamic cultures of the region with today's political Islamic Republic of Pakistan.

BLOOMSBURY

The Han Collection exhibition is *Brilliant Hues: Korean Antiques and Arts*, they are participating for the first time in AAL at MokSpace, 33 Museum Street and showcasing the natural colour of Korean antique objects including lacquerware, silverware, Buddhist paintings and sculpture mainly from the Choson dynasty with a few from the Koryo dynasty. Highlights include an 18th-century, Choson-dynasty, mother of pearl inlaid lacquer box and painted polychrome wooden sculptures of Buddhist boys also from the Choson dynasty and a 19th-century metal box inlaid with silver thread.

SHEPHERDS BUSH

New York based Fitzgerald Fine Arts who deal in contemporary ceramics and works of art is having an exhibition of photographs entitled *Han Bing: Urban Amber* at The Dorsett, 58 Shepherds Bush Green.

BY APPOINTMENT ONLY

John Eskenazi presents an exhibition of fine Indian, Southeast Asian and Himalayan sculptures in Little Venice, available to view by appointment only by phone or email from 6 October to 12 November. Highlights include a 12th-century South Indian bronze figure of Ganesha, a 3rd/4th-century mottled red sandstone head from Mathura and an 8th-century black stone stele from eastern India depicting the Buddha rendered in the tribhanga posture.

Kamal Bakhshi Modern Asian Art presents *Kazuko Shiihashi and Sei Arimori: Landscapes Real and Imagined in Modern Japanese Painting* in Kensington, available to view by appointment only by phone or email from 3 to 11 November. Sei Arimori imagines abstract landscapes, drawing on Zen tradition, using traditional Japanese techniques and materials whilst Kazuko Shiihashi's work reinterprets screen artists of eighteenth century Kyoto with themes from nature and the changing season with the texture of crushed *washi* paper.

Asian Art in London
3 - 12 November 2016

EAST MEETS WEST
asianartinlondon.com

16